

MONTHLY MEMBERSHIP PROGRESS REPORT

LOCATION OHIO

District 13 OH4

Results as of: 4/30/2023

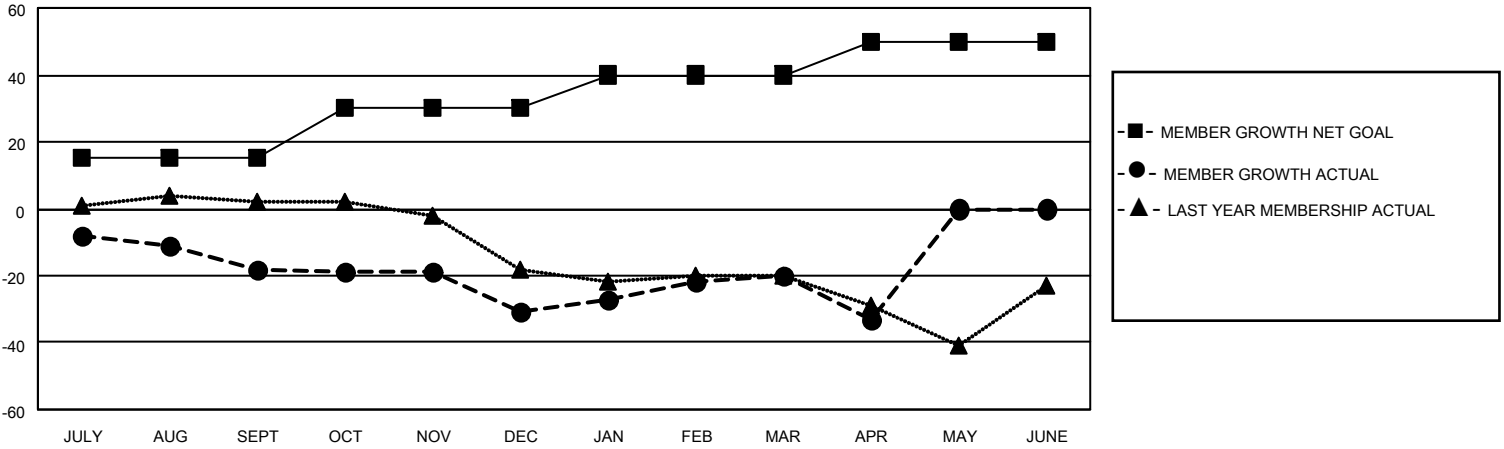
Clubs			
RESULTS FOR 2022-2023			
QUARTER	NEW CLUB GOAL	NEW CLUBS	DROPPED CLUBS
JULY/AUG/SEPT	1	0	0
OCT/NOV/DEC	1	0	0
JAN/FEB/MAR	1	0	0
APR/MAY/JUNE	1	0	0

Members			
RESULTS FOR 2022-2023			
QUARTER	MEMBER GROWTH NET GOAL	MEMBER GROWTH ACTUAL	DROPPED MEMBERS ACTUAL (including transfers)
JULY/AUG/SEPT	15	25	41
OCT/NOV/DEC	15	30	38
JAN/FEB/MAR	10	34	20
APR/MAY/JUNE	10	27	32

GOALS AND ACTUAL NEW CLUBS CUMULATIVE



GOALS AND ACTUAL MEMBERS CUMULATIVE



DROPPED CLUBS: 0

33 CLUBS OF 52 ADDED 1 OR MORE NEW MEMBERS

GENDER DISTRIBUTION

MALE	837 (62.37%)
FEMALE	504 (37.56%)
NON BINARY	0 (0.00%)
PREFER NOT TO ANSWER	1 (0.07%)

DROPPED MEMBERS

[CLICK HERE FOR CUMULATIVE MEMBERSHIP DATA](#)

DECEASED	25
CLUB CANCELLED	0
OTHER	106
TOTAL	131

TOTAL FAMILY UNIT MEMBERS	252
FAMILY MEMBERS PAYING HALF DUES	128